



Ever
Active
Schools
www.everactive.org

Advancing Campus and Community Well-being Through Teacher Preparation

Louise McClelland, Dr. Shelly
Russell-Mayhew, Kerri Murray

MARCH 2019 | HEALTHY MINDS | HEALTHY CAMPUSES



UNIVERSITY OF CALGARY
WERKLUND SCHOOL OF EDUCATION

IN THE NEXT 15 MINUTES....



**LINK BETWEEN
HEALTH AND
LEARNING**



**AN APPROACH
FOR EMBEDDING
WELLNESS**



**SCALING THIS
APPROACH**



Why?....

**"Health and education are interdependent: healthy students are better learners, and better-educated individuals are healthier."
- Joint Consortium for School Health**





Environments

HEALTHY LEARNING ENVIRONMENTS ACROSS THE EDUCATION CONTINUUM

Post-Secondary Institutions are a place of
higher learning.

Research tells us that Environments provide
context for our behaviours.

Environments - social & physical



Education Faculties

Added layer of effect - students in the Ed Faculty will have future students that they impact.



How?....

Case Study

**ADOPTING A COMPREHENSIVE SCHOOL HEALTH APPROACH
WITHIN A FACULTY OF EDUCATION:
THE WERKLUND SCHOOL OF EDUCATION,
UNIVERSITY OF CALGARY**



UNIVERSITY OF CALGARY
WERKLUND SCHOOL OF EDUCATION



Comprehensive School Health

Comprehensive School Health (CSH) Framework is an approach for building healthy school communities

Four components for action:

- Policy
- Teaching and Learning
- Partnerships and Services
- Social and Physical Environment



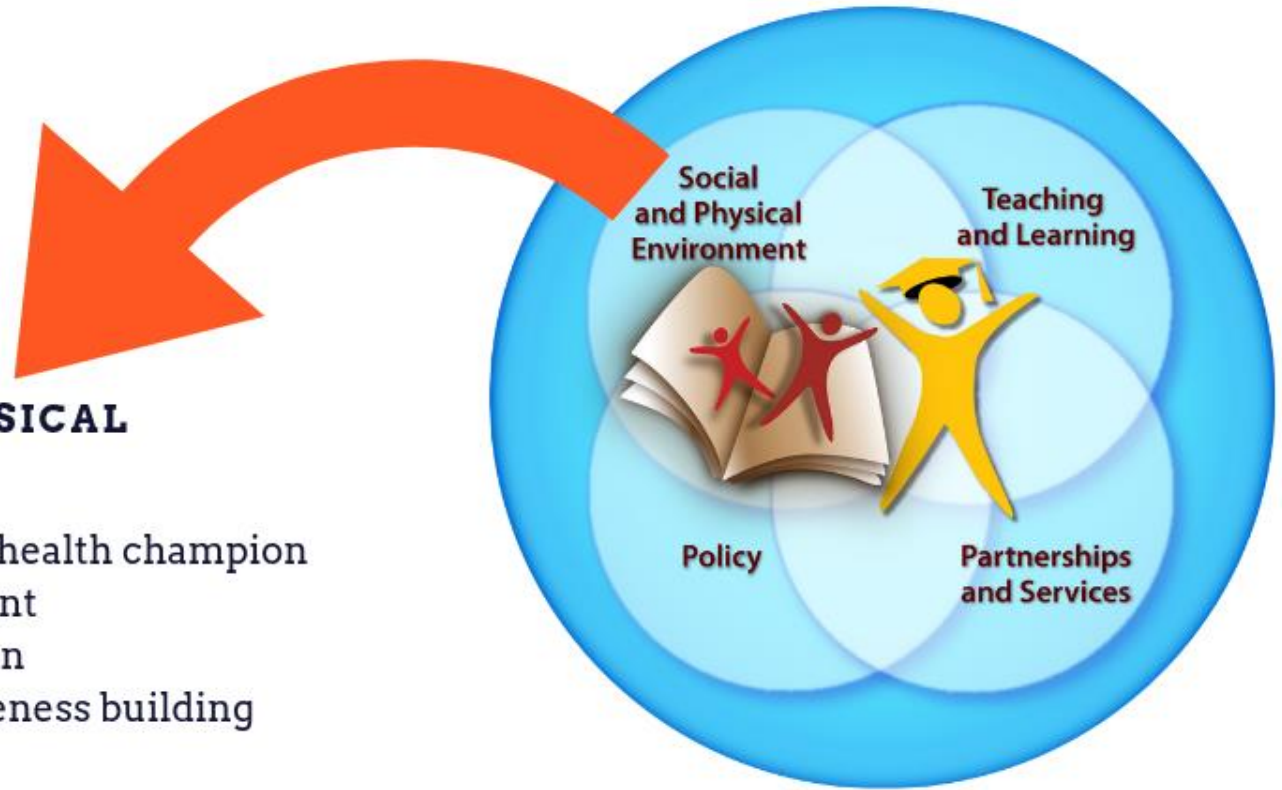
"Health and education are interdependent: healthy students are better learners, and better-educated individuals are healthier."

- Joint Consortium for School Health

WERKLUND SCHOOL OF EDUCATION EXAMPLE

SOCIAL AND PHYSICAL ENVIRONMENT

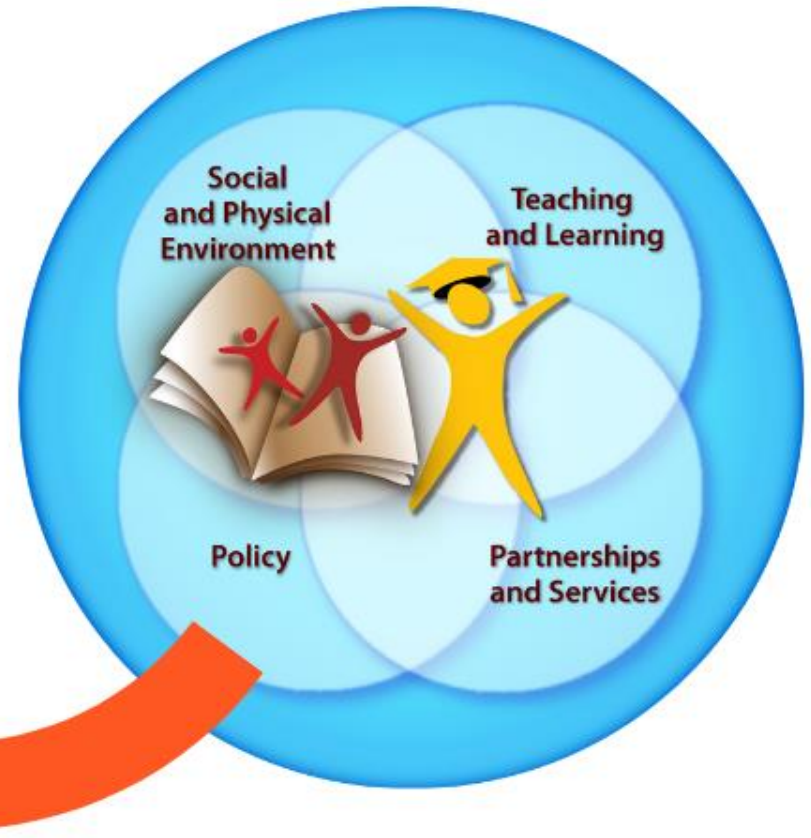
- Leadership from a health champion
- Student involvement
- Support from admin
- Faculty-wide awareness building



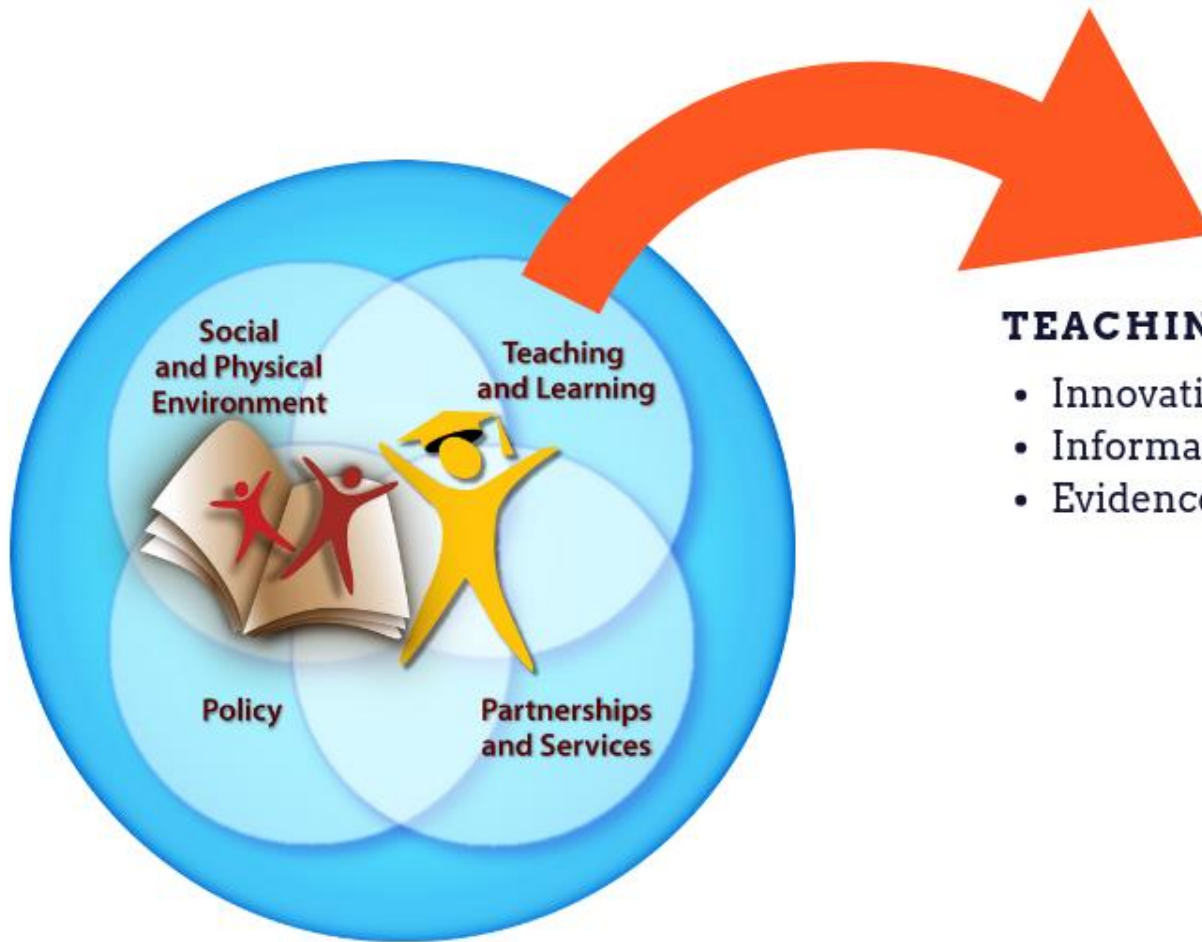
WERKLUND SCHOOL OF EDUCATION EXAMPLE

POLICY

- Allocation of resources
- Written policy (campus wide mental health strategy)



WERKLUND SCHOOL OF EDUCATION EXAMPLE



TEACHING AND LEARNING

- Innovative teaching strategies
- Information access
- Evidence/research

WERKLUND SCHOOL OF EDUCATION EXAMPLE



PARTNERSHIPS AND SERVICES

- Campus relations
- Interdisciplinary team
- Community outreach



OUTPUTS/OUTCOMES OF THIS APPROACH

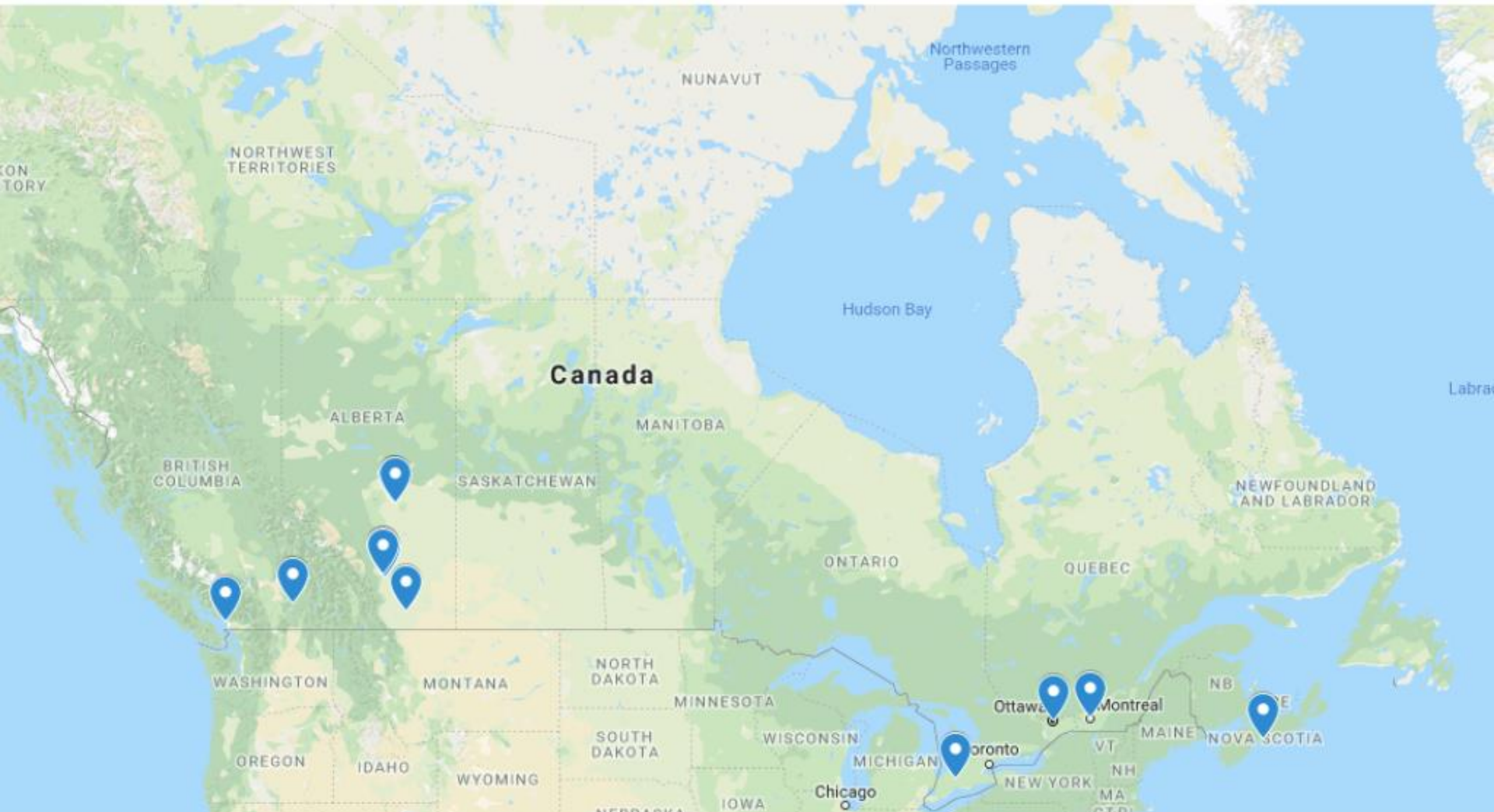


What?....

SCALING THIS WORK



NATIONAL SCALING (B.ED PROGRAMS)



Other Faculties

- Nursing faculties
- Social work faculties
- Others??



SAVE
the
DATE

National Forum on Wellness in Post-Secondary Education 2019

When: October 17 - October 18, 2019

Where: UBC Vancouver Campus

Stay tuned for a formal invitation!



THE UNIVERSITY
OF BRITISH COLUMBIA



UNIVERSITY OF CALGARY
WERKLUND SCHOOL OF EDUCATION



Ever
Active
Schools



UNIVERSITY OF CALGARY
WERKLUND SCHOOL OF EDUCATION



Thank You!

Louise McClelland, Ever Active Schools
louise@everactive.org



UNIVERSITY OF CALGARY
WERKLUND SCHOOL OF EDUCATION